

# 2017 National Picture Judging Contest

## Results & Reasons



Each year, the National Swine Registry (NSR) sponsors the National Picture Judging Contest. This competition is open to youth and adult participants and includes divisions for 4-H, FFA and collegiate teams. The contest ran in the December 2016 issue of *Seedstock EDGE* and on *nationalswine.com* with entries due Feb. 1. Here are this year's official results and reasons.

*\*Ties were broken based on individual class scores, beginning with the most difficult class or the class with the lowest sum of cuts.*

### College Individual Division (115 Contestants) 500 Points Possible

---

1<sup>st</sup> Place Total Score: 489  
Adam Gradert • Geneseo, Ill.

2<sup>nd</sup> Place Total Score: 486  
Cole Thomas • Aledo, Ill.

3<sup>rd</sup> (\*Tie Breaker) Place Total Score: 485  
Hunter Langholff • Wisconsin Rapids, Wis.

4<sup>th</sup> (\*Tie Breaker) Place Total Score: 485  
Lucas Stumpf • Columbia, Ill.

5<sup>th</sup> (\*Tie Breaker) Place Total Score: 485  
Morgan Carrick • Blanchard, Mich.

### Junior Individual Division (278 Contestants) 500 Points Possible

---

1<sup>st</sup> Place Total Score: 493  
Kyle Lund, Wilton, Iowa

2<sup>nd</sup> Place Total Score: 490  
Jada Rock, Wilton, Iowa  
Jerome Mays, Wilton, Iowa

3<sup>rd</sup> Place Total Score: 486  
Stephanie Schultz, Polo, Ill.

4<sup>th</sup> (\*Tie Breaker) Place Total Score: 484  
Bailey Roselieb, Annawan, Ill.  
Jaidyn Miller, Sheffield, Ill.

5<sup>th</sup> (\*Tie Breaker) Place Total Score: 484  
Cole Ellerbrock, Atkinson, Ill.

### Adult Individual Division (72 Contestants) 500 Points Possible

---

1<sup>st</sup> Place Total Score: 490  
Jason Corey, Painted Post, N.Y.

2<sup>nd</sup> (\*Tie Breaker) Place Total Score: 484  
Justin Hardin, Orion, Ill.

3<sup>rd</sup> (\*Tie Breaker) Place Total Score: 484  
Dusty Moser, Marlow, Okla.

4<sup>th</sup> Place Total Score: 480  
Tory VanOpdorp, Geneseo, Ill.

5<sup>th</sup> Place Total Score: 479  
Cody Johnson, Meeker, Okla.

### FFA Team Division (25 Teams) 2,000 Points Possible

---

1<sup>st</sup> Place Total Score: 1,954  
Wilton FFA, Wilton, Iowa  
Team Members: Tyler Hartman, Jada Rock, Kyle Lund, Jerome Mays

2<sup>nd</sup> Place Total Score: 1,904  
Fullerton FFA Team 3, Fullerton, Neb.  
Team Members: Chase Ostransky, Brent Wetovick, James Lesiak, T. J. Dubas

3<sup>rd</sup> Place Total Score: 1,848  
Walters FFA A, Walters, Okla.  
Team Members: Dakota Gorthy, Nathan Hart, Lauren Hill, Payton Stehle

4<sup>th</sup> Place Total Score: 1,839  
Fullerton FFA Team 2, Fullerton, Neb.  
Team Members: Cody Hambleton, Katie Voichahoske, Michaela Cunningham, Jarred Ulferts

5<sup>th</sup> Place Total Score: 1,831  
Fullerton FFA Team 1, Fullerton, Neb.  
Team Members: James Wetovick, John Wetovick, Kyle Knopik, Brandon Rasmussen

### 4-H Team Division (22 Teams) 2,000 Points Possible

---

1<sup>st</sup> Place Total Score: 1,921  
Henry-Stark 4-H Team 2, Galva, Ill.  
Team Members: Nicole Haverback, Bailey Roselieb, Jaidyn Miller, Hailey VanOrdorp

2<sup>nd</sup> Place Total Score: 1,887  
Knox County Gold, Gilson, Ill.  
Team Members: Andy Bates, Tyler West, Annika Spring, Dane Libby

3<sup>rd</sup> Place Total Score: 1,883  
Henry-Stark 4-H Team 1, Galva, Ill.  
Team Members: Cole Ellerbrock, Tyson McVicker, Jacob Dobbels, Josh Dobbels

4<sup>th</sup> Place Total Score: 1,851  
Henry-Stark 4-H Team 3, Galva, Ill.  
Team Members: Brylie Roberts, Grace Versluys, Annie Johnson, Kyla DeRycke

5<sup>th</sup> Place Total Score: 1,848  
Glimmer Girls, Churubusco, Ind.  
Team Members: Mallory Johnson, Maggie Johnson, Devyn Gaff, Delaney Gaff

### College Team Division (21 Teams) 2,500 Points Possible

---

1<sup>st</sup> Place Total Score: 2,414  
Black Hawk East 6, Galva, Ill.  
Team Members: Cole Thomas, Heath Borders, Robert Scholl II, Kagney Collins, Lucas Wisnefski

2<sup>nd</sup> Place Total Score: 2,408  
Black Hawk East 1, Galva, Ill.  
Team Members: Hunter Langholff, Hannah Lauffenburger, Kiley Elder, Easton Beard, Cody Dawson

3<sup>rd</sup> Place Total Score: 2,403  
Texas Tech University White, Lubbock, Texas  
Team Members: Jim Waldrop, Ben Weis, Brody Halfmann, Gabe Jennings, Mason Weadock

4<sup>th</sup> Place Total Score: 2,401  
Black Hawk East 3, Galva, Ill.  
Team Members: Stetson Bryson, Luke Wechter, Kip Wallace, James Dobbels, Morgan Carrick

5<sup>th</sup> Place Total Score: 2,391  
Black Hawk East 4, Galva, Ill.  
Team Members: Ross Helms, Adam Gradert, Aleck Main, Brittany Luttrell, Blake Hennenfernt

**Class 1 – Duroc Boars** Scenario: Rank these boars as they would be utilized in a commercial operation as terminal sires on F1 Yorkshire x Landrace females.



EPDs: -3.0 DAYS, +0.02 BF, +0.65 LBS, 128 TSI



EPDs: -3.9 DAYS, 0.00 BF, +1.40 LBS, 140 TSI



EPDs: -3.5 DAYS, -0.01 BF, +1.34 LBS, 138 TSI



EPDs: -2.0 DAYS, -0.04 BF, +1.09 LBS, 125 TSI

**Official Placing: 2-3-1-4 • Cuts: 2-5-3 • Reasons: Tim Arkfeld, Neb.**

We as a committee saw this class sorting into two pairs. Realizing the operations goal for a terminal sire to complement the maternal sow base, there are only two sires with the muscle and growth genetics combined with impressive TSI's that will meet the commercial call. Boars 2 and 3 sort rather quickly into our top pair. Of the pair of power boars, 2 is the one that can balance build and power into a sound package. He's the better footed, cleaner jointed boar that is more level out of his hip and is more acceptable

in the set of his hind leg. Sure, 3's a powerful big bodied hog that's heavier structured. But one look at his hock and rear pastern and we as a committee began to question his longevity and breeding soundness. Still, there's a clear gap in terminal sire potential in the middle. 3's the better numbered sire that is faster growing and, although not perfect himself, is better in the angle of his blade than 1. Certainly, 1 is a shapely boar that is set higher at the base of his tail. But he's the small scaled boar that's extremely

upright in his shoulder and tight hocked, we like him third. Now in a closer bottom pair that both are problematic, we feel that 1 will just sire more muscle and dimension on F1 females and be faster growing, ultimately making more profit than 4. Yes, 4 has some trendy pieces. He's the tall fronted, level made boar that's big boned. But all too often when we chase trends we lose sight of the big picture and he just doesn't have enough muscle to be called a terminal sire.



**OFFICIAL: Tim Arkfeld • Dunbar, Neb.**

Tim is the Agricultural Education Instructor and FFA Advisor at Syracuse High School, in Syracuse, Neb. He and his family own and operate Arkfeld Genetics.



**OFFICIAL: Mike Day • Ames, Okla.**

Mike Day is the owner of Day Farms, along with his wife, Lori, son, Cody, and daughter, Whitney. As a family, they run 20 purebred sows, mostly consisting of Hampshires with a few Durocs geared toward junior shows and NSR events.

**Class 2 – Hampshire Boars** Scenario: Rank these boars as they would be utilized on Hampshire and crossbred sows to produce purebred barrows and gilts, as well as crossbred barrows eligible for the Hampshire Sired Class at the World Pork Expo Jr. National.



**Official Placing: 3-2-4-1 • Cuts: 2-3-4 • Reasons: Mike Day, Okla.**

In this class of Hampshire Boars the committee felt that in the scenario of making showpigs that 3 came to the top. He is the one that is the most correct on his feet and legs. Also, he combines the heaviness of structure, width and overall design to lead off the class. 2 follows 3 in that he is tall fronted and heavy structured but

seems to lack the boldness of rib of 3 and doesn't appear as wide through his overall skeleton. 2 does appear to express a little more muscle through his rump than does 3. 2 does appear longer and taller fronted than 4 and should sire more attractive, well-balanced showpigs. 4 is the deep bodied massive boar but lacks the extension of

front end and flex to his rear hock to move higher. 4 is bolder ribbed and wider than 1. We felt 1 was an easy bottom. He is the worst designed and straightest through his shoulder, he appears to break behind his blades and needs to be leveler through his hip. 1 is leaner than 4 and is cleaner through his neck and head.

**Class 3 – Landrace Boars** Scenario: Rank these boars as they would be selected for use in a purebred operation that primarily focuses on producing grandparent boars for the purpose of F1 female production.



1

EPDs: +0.38 NBA, -0.22 WTE, 116 MLI



2

EPDs: +0.40 NBA, -0.25 WTE, 122 MLI



3

EPDs: -0.05 NBA, +0.10 WTE, 108 MLI



4

EPDs: +0.35 NBA, -0.21 WTE, 118 MLI

**Official Placing: 2-4-1-3 • Cuts: 3-3-7 • Reasons: Pat Arkfeld, Neb.**

The Landrace boars we felt were pretty straight forward, if you realized this was a commercial scenario that's making females. As a committee, we found three boars that offered quality. Of those three, the 2 boar is the one that you should label as the female maker. He's the big bodied robust herd sire that's correct in his build and offers plenty of power. Toss in his genetic values and we feel he should be the source of female genetics. We realize he's not a trend setter and we wish he was cleaner fronted, but realizing his progeny will never

see a show ring his real world look should be profitable. Now, we understand why some may start 4 he's the taller shouldered boar that's cleaner and more extended about his front end and offers more shape. But if you truly study his skeleton, it's clean, but he needs modification. The flat footed boar needs to be laid back in his blade and strikes us as flat ribbed. Still, in a middle pair of boars that both have unique breeding pieces we felt 4 was the bigger skeleton alternative that's better in the set of his hip and real leg. No question,

1 is bolder ribbed and heavier muscled, but we feel the plainer fronted boar needs to be more correct in the build of his hip and hind leg. But we still deem him functionally structured and use his added mass in the bottom. The boar that's more traditional in his breed character is backed with better numbers and is just more powerful. 3 may be a bit squarer toed, however the short-eared, straight-hocked boar is the least suited for this operation.



**OFFICIAL: Pat Arkfeld • Dunbar, Neb.**

Pat attended college at Kansas State University, where he was a member of the Livestock Judging Team. He is currently the Assistant Livestock Judging Coach at Hutchinson Community College, in Hutchinson, Kan. He and his father, Tim Arkfeld, operate Arkfeld Genetics.

**Class 4 – Yorkshire Boars** Scenario: Rank these boars as they would be purchased by a showpig producer who plans to utilize Yorkshire boars on crossbred females to improve the consistency and maternal quality of their sow herd.



1



2



3



4

**Official Placing: 4-3-2-1 • Cuts: 2-2-4 • Reasons: Doug Schaefer, Texas**

The top three hogs in this lineup all have the skeletal flexibility to make functional breeding stock. Between those, 4 is the most massive and boldest bodied. He studies with the most total mass through his ham and genuine base width underneath. 4's got the most to him, yet he studies as correct as any through his angles and he's the longest out of his hip. His ability to put power and correctness together is where we chose to start.

The committee still viewed the top pair as extremely close. After all, 3's got the edge in look through his front end where he is just as stout skulled but studies cleaner through his throat and jowl. He reads squarer at the topside of his blade and more expressive in the turn to his loin up high. His balance could make some impressive replacement gilts, but he's still got a barrow making look to

him. We were tempted to start the class with him and he makes a strong case to win. In the end, he's built shorter in his hip and straighter in the set to his hock. We left a good one second and only cut you 2 if you switched the top pair.

The middle pair still studies close, as well and these are perhaps the most different of any two hogs in the drive. We sided with 3's more rugged look and rib shape advantage within this particular pair. There are tradeoffs for structure that we will discuss, but we liked that 3 is more appropriate in the set to his pasterns.

The hog that studies the absolute most flexible in his skeleton sits in third. He's got the most cushion built into his hock and the most backward curvature to his knee. He's also the longest necked hog of the drive who is set high at the base of his tail. Ultimately, 2 just doesn't have the added

bulk of the top two boars in the set, and he's not as stout in his skull, forearm, or foot. On top of that, we wished his pasterns were a nickel stronger and worry that it could limit his versatility on crossbred gilts. Still, he's one of the three hogs in this drive who could make them more flexible and still keep hogs attractive up front.

The bottom pair was a structure sort and 2 looks like he should definitely get out and go with more reach. He also views more expressive down his top and thicker through his ham.

1 appears to be stout in his forearm and level hip. He's not presented quite as well at the backdrop, but he's one that runs downhill, ties his neck in the lowest, and still studies the straightest in his hock. He needs more muscle to hunt in this set as well.

**Class 5 – Duroc Gilts** Scenario: Rank these gilts as replacements in a purebred Duroc operation that utilizes a branded pork program to capture value added premiums.



1

EPDs: -2.5 DAYS, +0.01 IMF, 120 TSI



2

EPDs: -2.1 DAYS, -0.01 IMF, 118 TSI



3

EPDs: -3.2 DAYS, +0.23 IMF, 130 TSI



4

EPDs: -3.5 DAYS, +0.18 IMF, 132 TSI

**Official Placing: 4-3-2-1 • Cuts: 2-6-3 • Reasons: Pat Arkfeld, Neb.**

An awesome set of red gilts that we as a committee found exciting to sort through and discuss. First thing that you should think of when you turn to this page it that all four of these gilts could offer a lot of value in any program. Although the scenario states that these will be utilized in a branded pork program you still should realize these are some awesome gilts that you still can sort off of quality. As a committee we found two females to sort up based off their ability to combine power with the right kind of build and female quality. Of the pair we felt 4 was a bit more unique in

her head carriage and set of her hock. The light colored gilt is extremely tall fronted level made and offers plenty of power while still being great footed. Now we can understand if you like 3 she's the big bodied brood sow who's big boned and overwhelming in terms of power. However, we felt that the dark red gilt was a bit heavier conditioned and not as unique in her build. From there, we as a committee found a clear separation, in build, in the middle. 3 is just better in the angle of her blade and offers more natural mass and dimension. Yes, 2 is a clean-fronted, green-conditioned gilt

that's got more shape. But one look at her front end and we become concerned she's to upright in her blade and front pastern. Still, in a problematic bottom pair she's the feminine fronted gilt that's more genuine in her condition and more acceptable in the shape of her toes and better in the build of her hock. No doubt, 1 is the class leader in power and body. It's just unfortunate that she can't complement it with the right kind of build. She has to be better on her front feet and is pushing the upper limits of acceptable fat. Bottom line she needs to be better structured to move up any higher.



**OFFICIAL: Kevin Wendt • Dublin, Ohio**

Kevin Wendt is the national auctioneer for the Duroc, Hampshire, and Berkshire breeds. Kevin and his family have a 25 sow showpig and Hampshire breeding herd. He is currently a member of the Hampshire Swine Registry Board of Directors. Kevin has judged numerous county, state and regional shows and will be judging the NJSS, in Louisville Ky., this summer.

**Class 6 – Hampshire Gilts** Scenario: Rank these gilts as they would be purchased by an NJSA member who competes in the NJSA Premier Breeder program.



1



2



3



4

**Official Placing: 1-4-2-3 • Cuts: 2-7-3 • Reasons: Kevin Wendt, Ohio**

Wow, what a class of Hampshire females that all fit the scenario. The committee felt this class easily fell into a top pair and bottom pair. The narrow belted 1 gilt leads off the class as a great built, smooth designed, heavy structured female that combines look and balance to the highest degree. Great design and flawless in her angles and build and suits the eye as one you can build a program around. Followed closely,

in second place, with the 4 gilt that is another big centered wide chested female. The white legged 4 gilt however was a bit forward at her front knee and not as big in her rear toes and feet to place above 1. As we transition to the middle pair 4 places over 2. 4 is more ideal in her head and neck carriage and more correct in her angles out thru her hip and rear hock and thus fits the scenario in a more positive manner

than either 2 or 3. In the bottom pair, in a close placing, 2 offers more rib and center body and more width of skeleton than 3. We end up the class with 3, a longer muscled Hampshire female with good toes and greater strength of pasterns than 2. However she lacks the power in her rib cage and muscle density thru her rump and ham to be placed any higher in the class.

**Class 7 – Landrace Gilts** Scenario: Rank these gilts as they would be selected as replacements in a large multiplier that utilizes Landrace and Yorkshire genetics as the maternal foundation of their production herds.



1

EPDs: +0.21 NBA, -0.02 WTE, 110 SPI



2

EPDs: +0.22 NBA, -0.01 WTE, 114 SPI



3

EPDs: +0.27 NBA, -0.11 WTE, 117 SPI



4

EPDs: +0.35 NBA, -0.08 WTE, 120 SPI

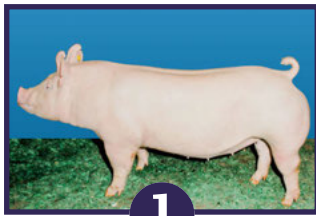
**Official Placing: 4-3-2-1 • Cuts: 2-7-2 • Reasons: Kevin Wendt, Ohio**

In evaluating the Landrace gilt class, the committee thought it was an easy decision to find a top pair and a bottom pair with 4 and 3 rising to the top based on the visual look of this pair of gilts and the data presented with the scenario. Quite simply, 4 looks like a Landrace female; long necked, level topped and hipped, high quality underline and clean jointed and has a slight advantage in numbers over 3. The 3 gilt follows closely in second and you first have to

admire her length of front, square muscle shape and flexibility out of her hock. She has the look and design of a show hog that could generate, however you would like to strengthen her pasterns and her overall maternal numbers to surpass 4. The middle pair is an easy placing as 3 dominates her contemporaries in production records and offers a more ideal skeleton and build to make correct replacement females. Moving on to the bottom

pair, in a close placing, 2 places over 1. 2 is longer fronted and looks more like a lady with a more correct and cleaner set to her hock and cleaner joints. We admit 1 is a heavier boned female with greater fore rib, however she lacks the correctness of skeleton and rear hock to survive the multiplier conditions the scenario calls for to place any higher in the class.

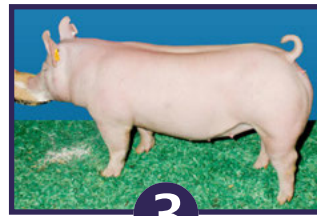
**Class 8 – Yorkshire Gilts** Scenario: Rank these gilts as they would be selected as replacements for a purebred Yorkshire operation that utilizes NSR Type Conference events to market breeding stock.



1



2



3



4

**Official Placing: 4-3-2-1 • Cuts: 3-3-5 • Reasons: Tim Arkfeld, Neb.**

This class offered us as a committee some discussion because we wish we could change every gilt in an area. But after breaking each one down individually, we feel that the 4 gilt puts the most positives together. She's the feminine fronted gilt that's tall shouldered, level designed and deep bodied. In order to make her win with ease we would like to see her bigger in her vulva and set down with more comfort in her hock and be better footed. But with mating protection we feel this is the gilt that has the best chance to produce

papered breeding stock. Now what makes it interesting is that 3 reads correct in her angles and strikes us as more youthful in her kind while also having a bigger vulva. It's just unfortunate that at first glance she's the frail featured gilt that needs a shot more substance. Still, she's a female in the middle decision that strikes us with more longevity. She's the better footed option that's more correct in her skeleton all the while being more feminine about her head and neck. Now there's no question 2 holds the class advantage for power, growth,

and body but it comes at a sacrifice to her build. The flat footed gilt is too straight up front and gets too easy topped. We feel this is the gilt, of the top three, that will take the most generations to make competitive breeding stock. With that said we side with her power in the bottom. Now, one is stronger topped and more correct on her feet. But our first impression of the flat, narrow constructed gilt, was that she's too frail and needs more natural dimension.

**OFFICIAL SWINE EAR TAGS**



Many states are now requiring swine to be tagged with official ear tags for interstate transport.

Visit [NATIONALSWINE.COM/LIBRARY](http://NATIONALSWINE.COM/LIBRARY) to download more information.

## Class 9 Grand Drive Barrows



Official Placing: 3-1-2-4 • Cuts: 2-3-6 • Reasons: Mike Day, Okla.

There were some differences of opinion on this class. We decided to lead off the class with the 3 Hampshire barrow because he combined heaviness of structure with being tall fronted and appears to be longer fronted than 1. One appears to be really blown apart through the center part of

his rib and longer in his rump than 3. 1 seems to have more shape down his top than 2. The 2 barrow is the big volumed, easy growing pig of the class but he needs to be a litter leaner in his appearance to be above 1. In the bottom pair, 2 is better designed and better out of his hip than

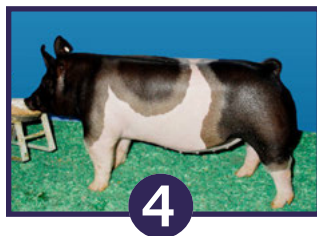
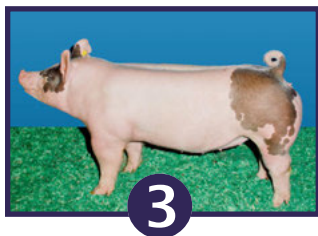
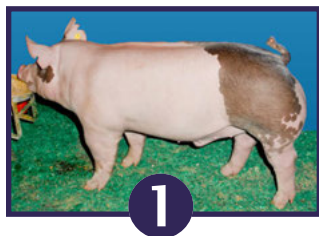
4. For us, the easy thing to do was put 4 fourth. He needs to be better off his rear legs and hip. He does appear to have a bit more shape than 2 but just lacks the overall design.



### OFFICIAL: Doug Schaefer • Garden City, Texas

Doug Schaefer and his family own and operate Schaefer Livestock, which includes approximately 60 sows consisting of crossbred, Berkshire, Chester, Duroc and Spot pigs. They also have a small boar stud used mainly for their own use, but they do have semen for sale. They have a passion for raising competitive showpigs. Initially, their focus was on crossbreds, however they have started raising purebreds to satisfy their customers needs.

## Class 10 Crossbred Market Hogs



Official Placing: 4-3-2-1 • Cuts: 2-2-5 • Reasons: Doug Schaefer, Texas

Depending on where you set your priorities, you could make a case for any of the top three hogs to win. Ultimately, the committee viewed the chromed up gilt to put the most good together and used her to lead off the class.

4's built with comfort and athleticism through her lower joints and studies balanced in her look from the side. She's attractive ahead of her blades and then opens back as bold as any through her blade, center skeleton, and hip. She's not perfect though, she studies a bit out at her elbow and could be picked up at the base of her tail, but these are pretty minor issues when you consider that 4's still a good looking hog with power and athleticism.

3's best view is from profile. The blue hipped gilt is high in her head carriage and neck set and extremely attractive from there back. Her correct skeletal

build lends to a very balanced look from the side. On her own, she's one that the committee wouldn't label as light muscled by any means, but she's arguably got the least total mass of any hog in this class. It's tough to make them this problem-free and she's the most complete, but we felt her deficit in total product and spread was enough to let her settle in second.

The middle pair is very different and the committee went back and forth. Between the pair, 3's just more captivating in her look and studies more youthful. Carcass-wise, she's leaner in her composition and has the edge in muscle shape up high.

The speckle-hipped barrow in third holds the class advantage for body dimension. He's the most pliable in his rib cage and very productive in his look. He's sound at the surface, just like the two we've got ahead of him. The problem

is this one's not as clean ahead of his blade, rounder out of his hip, and more modest in his muscle shape. We could see some tying to his body dimension and practical look, if that's their kind, but he just becomes the plainest of the top three so committee slotted him third.

The bottom is pretty straightforward, we used 2 over 1. In this pair, 2's obviously more comfortable and correct in his topline. On top of that, he views with more product and muscle over the topside of his skeleton.

The blanket hipped barrow that closes studies fairly sound at the ground and wide based. He's not out of the picture for total width and squareness underneath. We thought it stood out that he's the roundest out of his hip, the poorest balanced, and the plainest in his top shape. So we ran him fourth in a pretty strong lineup.