

DNA Sample Collection Procedures

This instruction sheet is intended to assist National Swine Registry members in collecting DNA samples for submission to the NSR office and to meet DNA requirements for sires when registering purebred Duroc, Hampshire, Yorkshire and Landrace litters. **Only OFFICIAL NSR BLOTTER/HAIR CARDS will be accepted.** Cards must be purchased from the NSR office for \$6 each.

Blood Collection



Locate vein on ear. Clean area with moistened cloth (water or rubbing alcohol). Wipe dry. Pierce vein with sharp end of the disposable lancet (provided) or a clean, sterile hypodermic needle.

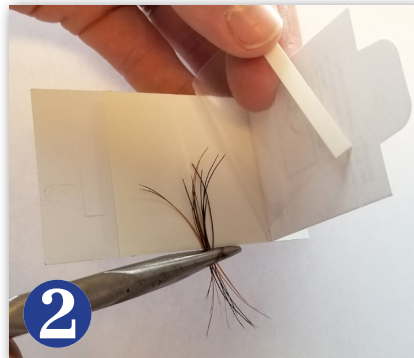


Withdraw lancet. Allow blood to collect on skin's surface. Allow blood to drip onto all 4 blotter card indicator circles. Make sure blood soaks through felt paper. Let card dry for 24 hours.

Hair Collection



Using pliers, pull hair making sure follicle (root) is intact.



Place hair on NSR-approved hair card. Make sure follicles are under the clear tab. Trim off excess hair outside the card. Make sure there are 30-50 hair follicles – it may take 4-6 hair pulls to get enough.

Blotter Card

Hair Card

Complete the space on the card for Owner, Breed, Ear Notch and Registration Number immediately to assure that sample is properly identified. Complete the breeder information on the NSR Testing Form with the sample ID and Breed.

3 Make certain that the sample is correctly identified with the owner, breed, ear notch and registration number.

4 Return the **BLOTTER** or **HAIR** card to the NSR office with the DNA Testing Form, and indicate the sample banking and/or diagnostic tests requested for the corresponding sample.

Type of samples accepted:

- **BLOOD**
- **RAW SEMEN** *DO NOT USE EXTENDED SEMEN* (same as Blood card method • Note on sample it is semen)
- **HAIR**