

Sponsored by the
National Swine Registry

2021 NATIONAL PICTURE JUDGING CONTEST

The data used in this contest is intended for educational purposes and is not the actual data for the pigs pictured. However, the figures accompanying the pictures will be used by our official judges to determine the official placings.

To enter the contest mail in the included form or visit nationalswine.com to enter online.



2021 National Picture Judging Contest

Official Entry Form

	Letter	
Class 1	<input type="checkbox"/>	Duroc Boars
Class 2	<input type="checkbox"/>	Hampshire Boars
Class 3	<input type="checkbox"/>	Landrace Boars
Class 4	<input type="checkbox"/>	Yorkshire Boars
Class 5	<input type="checkbox"/>	Duroc Gilts
Class 6	<input type="checkbox"/>	Hampshire Gilts
Class 7	<input type="checkbox"/>	Landrace Gilts
Class 8	<input type="checkbox"/>	Yorkshire Gilts
Class 9	<input type="checkbox"/>	Grand Drive Barrows
Class 10	<input type="checkbox"/>	Crossbred Market Hogs

Instructions

- Rank the animals in each of the 10 classes listed to the left
- Mark the official entry form (left) with the letter that corresponds to your placing for each class
- Only one letter placing per class

1	2	3	4	A
1	2	4	3	B
1	3	2	4	C
1	3	4	2	D
1	4	2	3	E
1	4	3	2	F
2	1	3	4	G
2	1	4	3	H
2	3	1	4	I
2	3	4	1	J
2	4	1	3	K
2	4	3	1	L

3	1	2	4	M
3	1	4	2	N
3	2	1	4	O
3	2	4	1	P
3	4	1	2	Q
3	4	2	1	R
4	1	2	3	S
4	1	3	2	T
4	2	1	3	U
4	2	3	1	V
4	3	1	2	W
4	3	2	1	X

Entries must be postmarked or entered online by Feb. 1, 2020

Individual divisions: <input type="checkbox"/> Junior division <input type="checkbox"/> College division <input type="checkbox"/> Adult division			For office use only: _____
Name _____			
Address _____ City _____ State _____ Zip _____			
Phone _____ E-mail _____			
Team divisions: <input type="checkbox"/> 4-H Team <input type="checkbox"/> FFA Team <input type="checkbox"/> College Team			For office use only: _____ For office use only: _____
(4-H and FFA team must have four members ONLY; College team must have five members ONLY)			
PRINT team members' names: 1. _____ 2. _____			
3. _____ 4. _____ 5. _____			
School or Club Name _____			
Address _____ City _____ State _____ Zip _____			

Divisions

Individual divisions include Junior, Collegiate and Senior. Team divisions include 4-H, FFA and Collegiate. Teams MUST consist of: 4-H and FFA – four total members (no more, no less); Collegiate – five total members (no more, no less). There is NO MAXIMUM number of teams per school or club, but each team must have a different name.

Entries

Each individual may enter only ONE time, either as an individual or on one team (i.e., cannot enter on both a 4-H and a FFA team). All team entries will automatically be entered as individuals as well. Enter online at www.nationalswine.com, or mail legible entries to: Picture Judging Contest, 2639 Yeager Rd., West Lafayette, IN 47906.

Additional copies of this form can be downloaded at www.nationalswine.com. No reprints will be mailed from the NSR office. Remember, this is an educational event.

Each individual or team member must complete their own entry form, and only one entry should appear on each mailed form. This contest is open to all purebred seedstock enthusiasts in the United States.

Results

Official placings, reasons and contest winners will appear online at www.nationalswine.com after April 1, 2021, and in the 2021 April/May issue of *Seedstock EDGE*. All ties will be broken by the highest score in chronological class order. First through fifth place will be named in each division, and plaques will be awarded to the first-place winner of each division.

Enter online at nationalswine.com

EXPLANATION OF TERMS:

Expected Progeny Difference (EPD) – An EPD is the best estimate of a sire's or dam's genetic worth, given the information available. It is the actual difference in performance a producer can expect from future progeny of a sire or dam, relative to the future progeny of an average tested parent.

Swine Testing and Genetic Evaluation System (STAGES™) – A genetic evaluation system provided to the members of the four breed associations of the National Swine Registry (NSR). STAGES™ utilizes performance records for numerous growth, carcass and maternal measures to predict the genetic value of each pig and its parents.

EPDs:

Backfat (BF): Expressed in inches, this EPD is a predictor of the difference in external fat thickness at the 10th rib. Animals with negative (-) EPDs for backfat will produce offspring that have less backfat at harvest than offspring of parents with higher EPDs.

Pounds of Lean (LBS): A genetic predictor of pounds of fat-free lean adjusted to a 185-pound carcass, or approximately a 250-pound live weight. This EPD is calculated from the EPDs for Backfat and Loin Eye Area. A sire with a positive (+) EPD for LBS will produce offspring that yield a higher percentage of lean and have a greater chance of obtaining full value on a lean-based carcass grid.

Days to 250 pounds (DAYS): A prediction of an individual's genetic merit for growth performance to a 250-pound live weight. Animals with a negative (-) EPD for DAYS will produce offspring that require fewer days to reach market weight when compared to the offspring of individuals with positive (+) genetic values for DAYS. Selection on this EPD will produce progeny that aid in earlier building close outs.

Feed Efficiency (FE): Expressed in pounds, this EPD is a predictor of the amount of feed required to generate one pound of gain during the finishing phase of production and is calculated from the EPDs for BF and DAYS. Selection of sires with negative (-) EPDs will produce progeny that more efficiently convert feed to gain when compared to sires with higher EPDs for FE. This EPD can be used to genetically decrease feed costs.

Number Born Alive (NBA): An expression of the genetic merit for the number of live pigs farrowed in a litter. Daughters of sires with positive (+) EPDs for NBA will farrow a greater number of live pigs than daughters of sires with lower EPDs for NBA.

Number Weaned (NW): A genetic predictor of the total number of pigs weaned within a given parity. Daughters of sires with positive (+) EPDs for NW will wean larger litters than daughters of sires with lower genetic values for NW.

Loin Eye Area (LEA): Expressed in square inches, this EPD is a predictor of an individual's genetic merit for 10th rib loin eye area adjusted to a 250-pound live weight. Animals with a positive (+) EPD for LEA will produce progeny with more loin muscle when compared to the offspring of animals with negative (-) genetic values for LEA.

Wean to Estrus Interval (WTE): Expressed in days, this EPD is a genetic predictor of the number of days required for a female to return to a serviceable heat after weaning. Daughters of sires with negative (-) EPDs for WTE will require fewer days to return to estrus after weaning than daughters of sires with higher EPDs. This EPD is the most efficient selection tool for genetic improvement of fertility and non-productive sow days.

Sow Productivity Index (SPI): An economic index that ranks individuals for reproductive traits. SPI weights the EPDs for Number Born Alive, Number Weaned and Litter Weight relative to their economic values. Each point of SPI represents \$1 per litter produced by every daughter of a sire. When sow efficiency is the primary concern, SPI may be the most effective selection tool for simultaneous improvement of maternal traits.

Maternal Line Index (MLI): An economic index designed for selection of seedstock used to produce replacement gilts for crossbreeding programs. MLI weights EPDs for both terminal and maternal traits relative to their economic values, with approximately twice as much emphasis on reproductive traits relative to post-weaning traits. Each point of MLI represents \$1 per litter produced by every daughter of a sire.

Terminal Sire Index (TSI): An economic index designed for the selection of seedstock for use in a terminal crossbreeding program. Animals selected for high TSI are designed to excel in lean growth and efficiency from weaning to harvest. TSI weights EPDs for Backfat, Days to 250 Pounds, Pounds of Lean, and feed/pound of gain relative to their economic values. Each additional index point difference is equal to \$0.10 per market hog.

Actual Data:

Weight Per Day of Age (Wda): Based on actual weight and age, this measure is the weight gained per day of age averaged over the life of the pig.

10th Rib Backfat (Bf): Expressed in inches, this is an actual ultrasound measure of backfat at the 10th rib and is adjusted to 250 pounds.

Loin Eye Area (Lea): Expressed in square inches, this is the actual ultrasound measurement of the loin eye size at the 10th rib and is adjusted to 250 pounds.

Intramuscular Fat (Imf): Expressed as a percentage, this value is an ultrasound measure of the lipid content of the loin muscle. Higher levels of Intramuscular Fat (IMF) are desired for meat quality based markets.

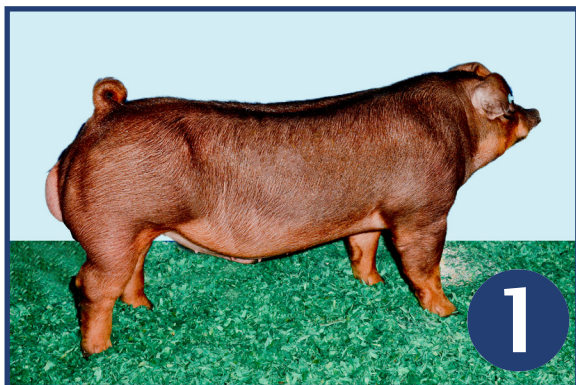
Actual Number Born Alive (Nba): This value is the actual number of pigs born from the dam's parity when the pig was born and are measurements taken from the pig's dam.

Actual Number Weaned (Nw): This value is the actual number of pigs weaned from the dam's parity when the pig was born and are measurements taken from the pig's dam.

Litter Weight (Lwt): This is the actual cumulative weight of all pigs weaned from the pigs birth litter. This weight is recorded on the pig's dam and is adjusted to 21 days of lactation.

Class 1 – Duroc Boars

Scenario: Rank these boars as they should be selected by a purebred Duroc producer. The primary goal of this producer is to generate fast growing market hogs with the end goal of marketing Certified DUROC® Pork to local restaurants and markets. This producer also has a strong custom pork clientele that covets the Certified DUROC® Brand.



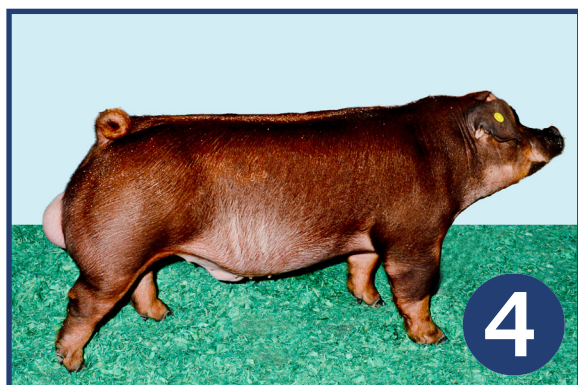
Actual Data: 159 DAYS to 250, 7.9 LEA, .86 BF, 109 TSI, 2.3 IMF



Actual Data: 150 DAYS to 250, 8.7 LEA, .72 BF, 117 TSI, 4.6 IMF



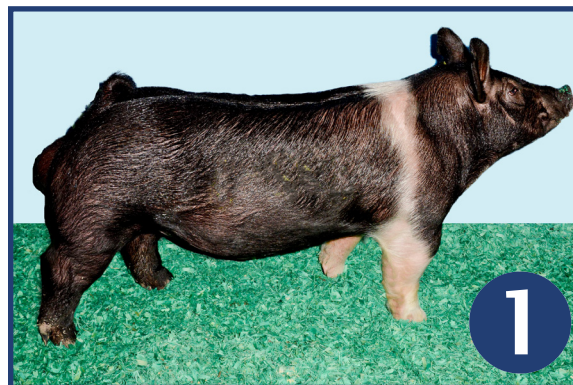
Actual Data: 161 DAYS to 250, 8.2 LEA, .64 BF, 112 TSI, 3.1 IMF



Actual Data: 152 DAYS to 250, 8.5 LEA, .70 BF, 115 TSI, 4.2 IMF

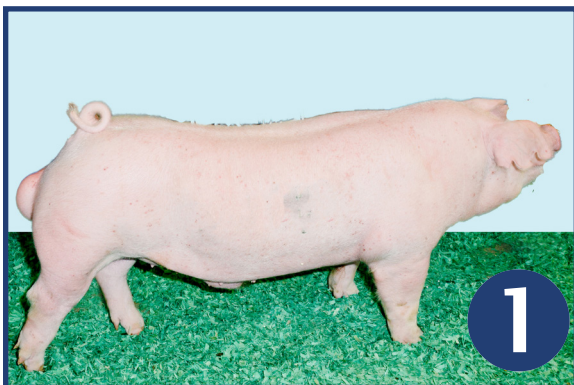
Class 2 – Hampshire Boars

Scenario: Rank these boars as they should be selected by a breeder for the use on both purebred Hampshire and Yorkshire sows. Elite purebred and crossbred offspring will be marketed as junior projects. In order to improve the sow herd and other purebred herds, a select group will either be retained as replacements or marketed through Type Conferences.

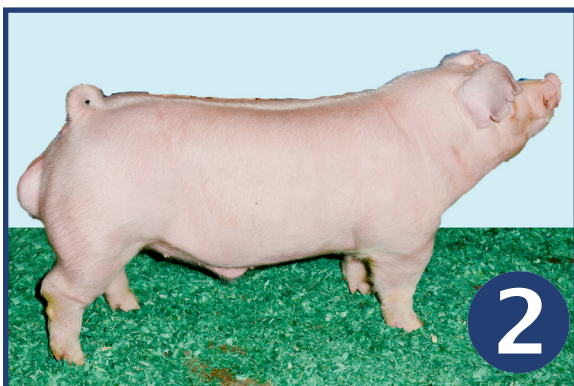


Class 3 – Landrace Boars

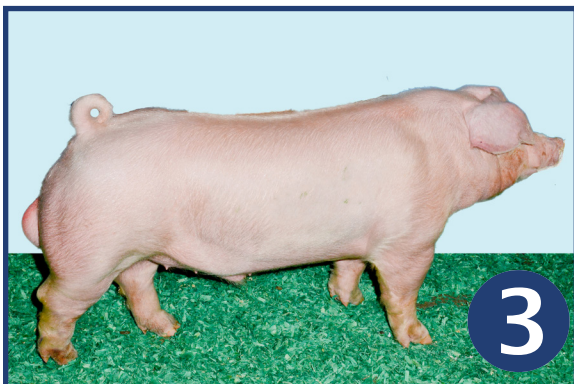
Scenario: Rank these boars as they should be selected by a commercial hog producer with the intention of mating them to Yorkshire sows. The primary goal of this mating is to retain as many F1 white line females as possible while also generating productive market hogs that will perform well on the finishing floor.



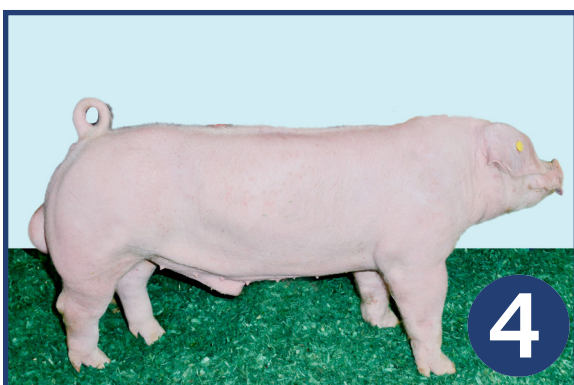
EPDs: +.35 NBA, +1.9 LWT, 121 MLI



EPDs: +.40 NBA, +4.1 LWT, 125 MLI



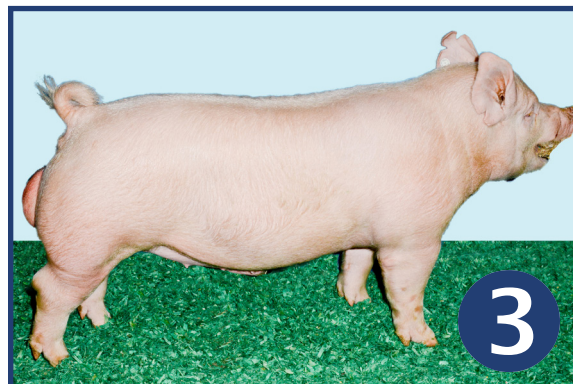
EPDs: +.42 NBA, +3.9 LWT, 126 MLI



EPDs: +.30 NBA, +3.0 LWT, 118 MLI

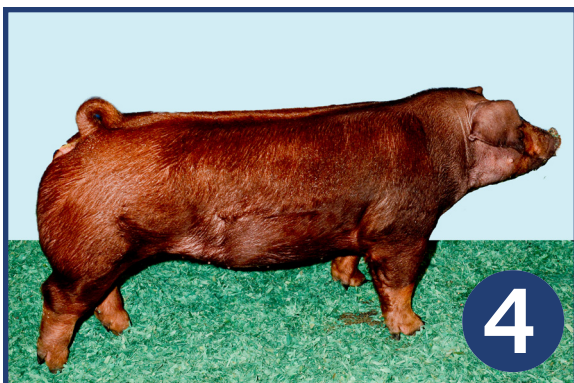
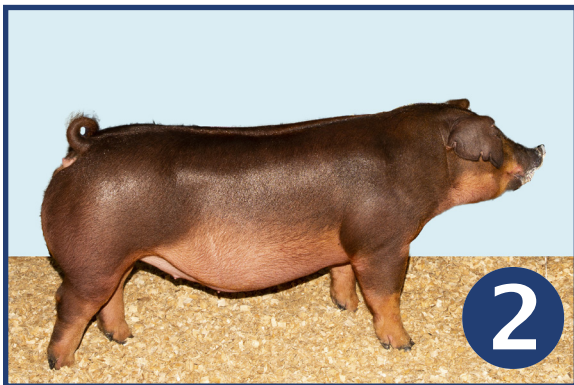
Class 4 – Yorkshire Boars

Scenario: Rank these boars as they should be selected by a boar stud owner looking to expand their Yorkshire boar battery. The primary purpose of selected boars will be to generate junior barrow and gilt projects throughout the country. However, this boar stud also services a clientele base of purebred operations that raise Yorkshire seedstock.



Class 5 – Duroc Gilts

Scenario: Rank these gilts as they should be selected as replacements in a purebred operation that utilizes Type Conferences to market elite seedstock and also profits from selling junior barrow and gilt projects.



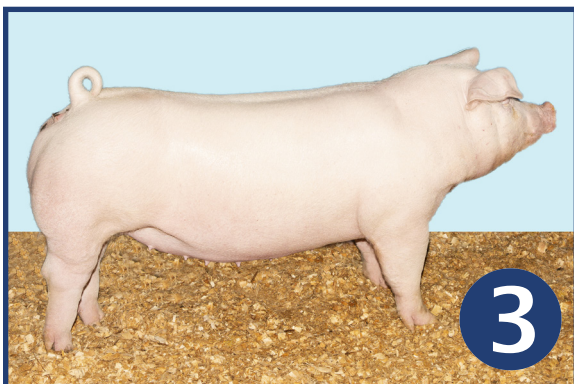
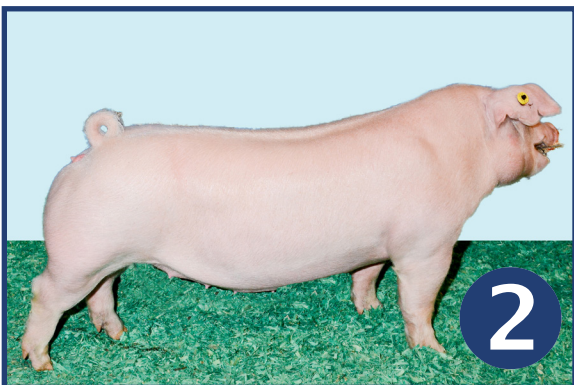
Class 6 – Hampshire Gilts

Scenario: Rank these gilts to be utilized by a progressive purebred breeder. Top replacements will be bred to Hampshire boars to produce seedstock that will be marketed at national shows and sales. Other females will be bred exotic to produce showpigs for local clientele.



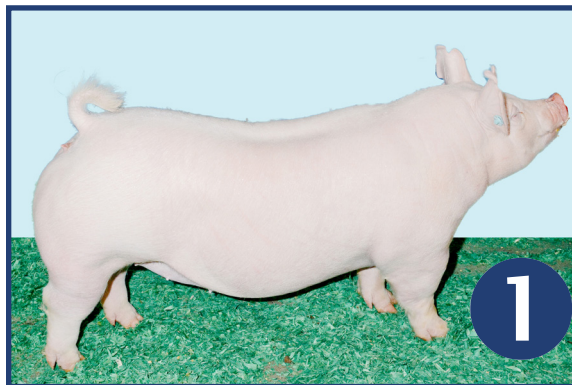
Class 7 – Landrace Gilts

Scenario: Rank these gilts as they should be selected by an NJSA member to purchase through a Type Conference Sale. The primary goal with these females will be to breed them with the intention of producing high caliber show gilts to exhibit in the Bred-and-Owned division at NJSA events.

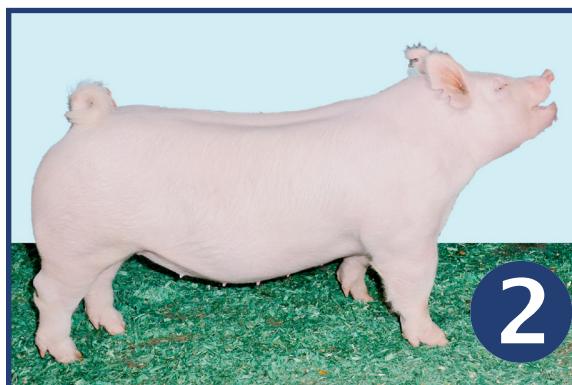


Class 8 – Yorkshire Gilts

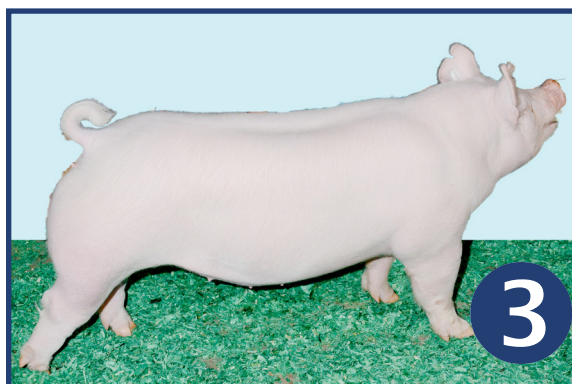
Scenario: Rank these gilts as potential replacements within a purebred seedstock operation focusing on the sale of premier gilts and boars at Type Conferences. Additional revenue is generated from the sale of elite junior barrows and gilts.



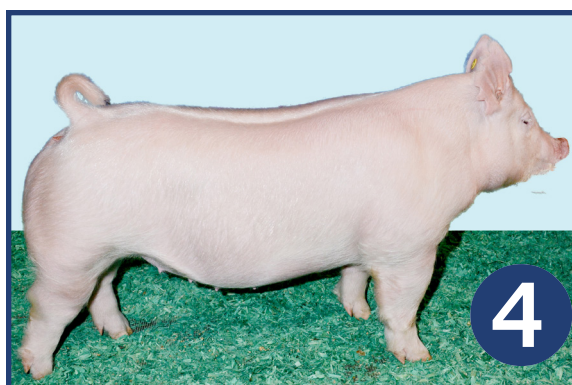
EPDs: +.32 NBA, 111 MLI, 115 SPI



EPDs: +.30 NBA, 109 MLI, 113 SPI

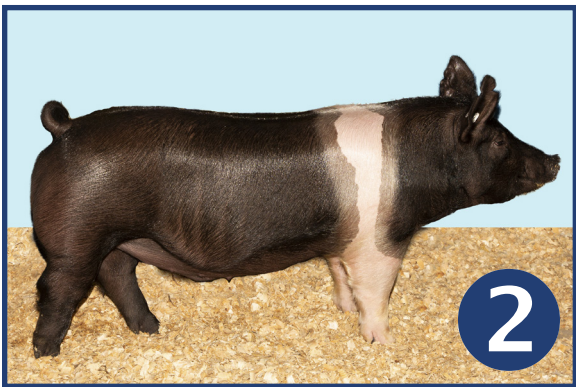
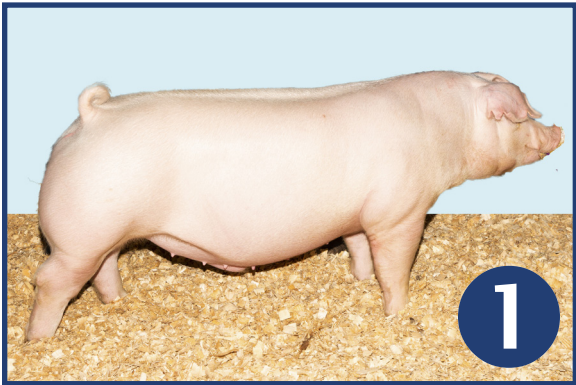


EPDs: +.28 NBA, 107 MLI, 112 SPI



EPDs: +.24 NBA, 105 MLI, 108 SPI

Class 9 Grand Drive Barrows



Class 10 Crossbred Market Hogs

